

Fx N Metal – Metal Sculpture/Décor Wall Hanging Recommendations

Purpose of this Document

This document is intended to provide the Fx N Metal 2D product purchaser general guidance/recommendations for mounting metal sculpture/décor to a vertical wall.

Point of Caution

If you are inexperienced at hanging wall art or working with carpentry tools on a variety of surfaces/materials, please seek the advice or help from a qualified professional.

3D Vs 2D Products

Fx N Metal products fall into two mounting/display categories; 3D and 2D.

The 3D products are designed to sit on a flat surface, are viewable from top and all horizontal sides. The 3D products have protective covers on their base or feet to prevent marring of the display surface and do not have any specific requirement for display other than a level/stable surface. Other than defining what 3D products are, this paragraph is informational only.

2D products are typically mounted on a wall and are visible from all sides, except the back, which is against the wall. These recommendations apply specifically to 2D products.

Wall Materials

Walls are constructed in a variety of materials (drywall, metal, wood, stucco, stone, brick, concrete, etc..). It is the purchaser's responsibility to select and mount the 2D product with hanging hardware designed for the size and weight of the product purchased and the wall material on which the product is mounted.

Point of Caution

Hanging hardware falls into two general wall attachment categories; mechanical and adhesive. Fx N Metal recommends using mechanical attachment hanging devices to minimize the risk of products falling off the wall and being broken or damaged. The adhesive hanging system design depends on adhesive to hold the hanger and product to the substrate (wall). With this design there is a risk over time for the adhesive, for a variety of reasons, to weaken or fail and release the load. Adhesive mounting hardware is not discussed or recommended.



Hanging Hardware Capacity

All hanging hardware is rated by its manufacturer for a vertical load carry capacity (in pounds) when mounted in the wall material it is designed for. Select your hanging hardware based on two parameters; product load/weight and mounting wall material. Weights for each Fx N Metal product are shown on the Product Portfolio pages. Select a hanger load rating that is at least twice the product weight for single point hanging and the product weight for double (or more) point hanging. Using hanging devices with a larger than recommended load capacity is ok.

Hanging Hardware Examples

Image 1.1 shows typical (not all) mechanical wall hanging hardware.



Image 1.1 - Examples of Typical Mechanical Wall Hanging Hardware

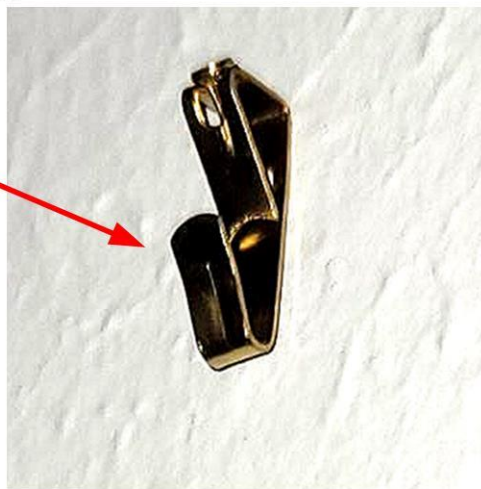
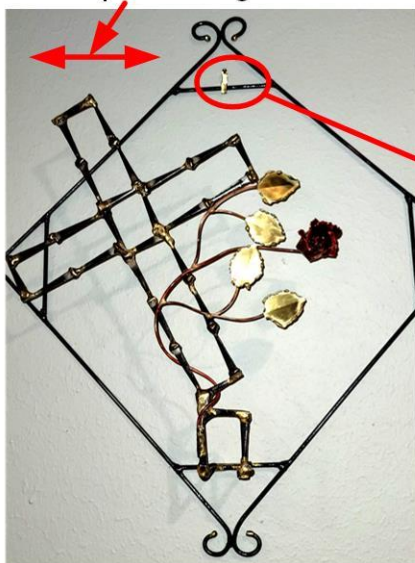
Use of Single Vs Double (or more) Hanging Hardware

As discussed in Hanging Hardware Capacity section above, your wall art product will be mounted using one, two or more hanging hardware devices.

When you receive your product, the recommended mounting points will be marked with removable tags. Alignment of single point mounts require alignment to the hanging device using center of gravity alignment – see Image 1.2 for reference. Alignment of double (or more) point mounts require alignment of product's viewing direction to be level with the floor. For these types of mounts, a line through the mounting holes should be level with the floor. Location of these mounting points is accomplished using a carpenter level and ruler/tape measure to mark the hanging device location. See Image 1.3 for reference. With products requiring more than 2

hanging devices, you will receive a sketch of specific mounting recommendations with the product shipment. Products over 25 pounds may require hanging devices to be fastened to a wall stud.

Move product right/left until it hangs level



Single mounting hanger in drywall

Image 1.2 – Single Point Mount Recommendations



Mounting holes to be level with floor

Image 1.3 – Double Point Mount Recommendations

Tools for Hanging Metal Sculpture/Décor

The following are typical hand tools required for hanging Metal Sculpture/Décor. This list is typical and not all inclusive. Depending on the mounting and hardware requirements for each product, the mounting location, and the wall material, more/less/different tools may be required.

- Safety Glasses
- Gloves
- Tape Measure
- Step Ladder
- Drill Motor w/Bits
- Screw Drivers
- Hammer
- Carpenter Level
- Carpenter Square
- Stud Finder
- Drop Cloth
- Pencil
- Straight Edge
- Center Punch